



Core
Associates

Get Ahead with Automated AP Processing & Content Management

TimberScan and the connected
solutions that allow you to
work the way you want to.



TimberScan®, by Core Associates, automates every aspect of the accounts payable process, including data entry, approvals, and reporting. It eliminates manual-processing risks, and ends the relentless paper-chase that hampers timely invoice approval.

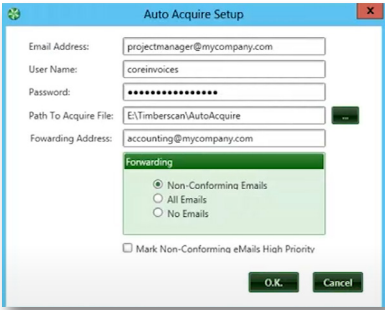


More than 30,000 users around the world trust TimberScan to help them better manage AP invoice processing. Designed specifically for Sage CRE users, TimberScan automatically routes invoices to the correct approvers who can bypass, reject, or place a hold on invoices to simplify and shorten the entire cycle.

“If you have Sage CRE you should have TimberScan to make your AP process easier and faster.”

- C. Russell, Director of Information Systems

Acquiring Data



It all starts with accounts payable invoices. These include your business’s material purchases, regular overhead expenditures, service invoices, and employee expenses. Some invoices may arrive in your AP inbox and some are received as paper receipts straight to your desk yet others are acquired as scanned files in your normal inbox. TimberScan recognizes that you need options and provides easy methods to import AP data. Drag and Drop functionality makes it simple to obtain invoices from any source. **Email Monitoring** automatically saves attachments from emails in designated inboxes.

While drag and drop gives you manual control, Email Monitoring is always running. The optional **Acquire Automation** takes Email Monitoring a step further and sends your invoices straight to data entry, touch-free.

TimberScan Capture is the option that turns images into usable data so there’s no manual data entry at all! Using OCR (optical character recognition) technology, Capture leverages vendor templates to recognize key invoice elements from images. Capture works on pdf invoices, scanned documents and numerous other file formats, to code and populate TimberScan invoices. Capture can even process multiple documents at once to save you hours of processing time.

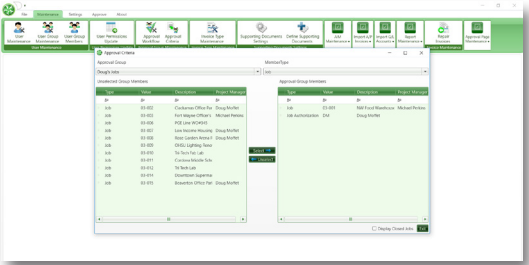
Securely store documents in native format with virtually any extension (.tiff, .xls, .pdf, .doc, .jpeg, and more) while syncing with your Sage 300 CRE system. Powerful content management features allow you to store, categorize, and search directly from TimberScan. For convenience, document searches can also be executed from Sage 300 CRE.



Capture

Managing Approvals

With accounts payable information acquired and loaded into TimberScan, it’s time to automate the approval process. Yes, that’s right automate it —no more back and forth with sign-offs or delays due to missing invoices or signatures. Simply identify an approval workflow, assign it to your TimberScan invoice, and you’re done!



Routing rules in TimberScan are easily defined and modified. Powerful user-level security maintains confidentiality and data integrity.

Get cloud-based approvals on-the-go with **TimberScan Go**, the mobile ready app for TimberScan. Shorten approval times by giving remote and field personnel the ability to access AP invoices from their mobile devices. Now they can review, approve, or reject from anywhere as an included feature of TimberScan! Offline entries sync with systems once they’re back online.

Reporting

Reporting on AP invoice approvals and processes with TimberScan is a snap and can help to significantly improve a company’s efficiency, productivity, and, ultimately, bottom line. Reports can be run from TimberScan that show all costs associated with a job or company including those still in the approval process or already posted to Sage 300 CRE. TimberScan also provides the visibility into who is holding onto specific invoices, and for how long. Data mining and analysis is made easy with **flexible reporting** and a customizable dashboard.



Workflows

Now that your AP invoice approval process has been converted into an automatic workflow with TimberScan, add automated workflows to other types of documents. **TimberScan Commander** lets you add workflows to reports or even sensitive documents from just about any system using simple print functionality. For example, use Commander to send password protected pay stubs to individual employees using a single command. Sending mounds of individual emails is a thing of the past! Attachments can flow seamlessly into one or multiple Sage 300 CRE records (you guessed it:) automatically, for superior content management.

TimberScan also has available **integrations** with AvidXchange®, Procore® and more!



Commander

Top-Rated Support



From implementations to troubleshooting, the Core Associates support team is comprised of experienced and friendly personnel ready to assist. Rated 5 out of 5, time and time again, many of our support team members have been working with Sage and TimberScan products for more than 12 years. With your TimberScan support contract you'll receive telephone support, 24/7 online access to the TimberScan Knowledgebase, product updates and enhancements, customer newsletters, as well as exclusive product discounts and promotions. Additional services such as remote backups, customizations, and integrations are also available.



With seamless connectivity, TimberScan is the leading AP Invoice processing solution designed exclusively for Sage 300 CRE. Ask about our other integrations and the **FREE Core Cloud Systems (CCS) eForms license that comes with TimberScan**. TimberScan has an intuitive software interface making it easy for you to:

- Automate AP invoice approvals to end the paper chase
- Add workflows to virtually any report
- Say goodbye to tedious data entry and manual tasks
- Eliminate paper waste
- Reduce overhead costs
- and just relax!

Core Associates, LLC is the proud maker of TimberScan, the leading AP approval processing and content management software for Sage 300 CRE and Sage 100 Contractor users. Primarily serving the construction and real estate industries, Core Associates is a charitable and growing business that offers an excellent operational environment for its talented workforce. As a certified Sage Development Partner, Core Associates provides exceptional services along with quality software that is continually innovating based on the evolving demands of the market. The Core Associates product portfolio includes hosted, mobile, and cloud-based applications serving more than 30,000 users, worldwide.

888-666-CORE

www.core-assoc.com

Copyright ©2019 Core Associates, LLC.

Get Social With Us



*"It's the best
software we ever
purchased!"
- D. Daigle,
Controller*

CIO TOP 10
CONSTRUCTION
TECHNOLOGY
APPLICATIONS SOLUTION PROVIDERS - 2019

sage

Construction and Real Estate
Development Partner